



CLEVER
Cities

CLEVER Cities

Co-created nature-based solutions for urban regeneration

www.clevercities.eu

This project has received funding from the European Union's Horizon 2020 research and innovation programme under grant agreement no. 776604.



CLEVER Cities

A Horizon 2020 project (2018-2023)

- Nature-based solutions (NbS) for urban regeneration addressing a nexus of societal challenges (climate adaptation, biodiversity loss, citizen safety, social cohesion, economic prosperity, and health/well-being)
- 33 partners from 10 countries - project coordinator: Hamburg
- Cities, universities, NGOs, consultants, municipal networks
- Co-creative design, implementation, monitoring and management of NbS interventions
- Urban test beds (CLEVER Action Labs) incl. long-term participatory formats



CLEVER focus areas

Urban regeneration in Hamburg, London, Milano



Neighbourhoods in need of urban regeneration often characterized by

- higher levels of poverty
- less healthy residents
- public spaces in need of upgrading
- limited access to green spaces

CLEVER focus areas

Urban regeneration in Hamburg, London, Milano



- high diversity among residents
- some communities hard to reach in participatory processes
- interventions have to be customized to the needs of the communities so that co-benefits of NBS can be gained
- co-creative approaches required

CLEVER Cities

Co-benefits: green links

- Increased social cohesion through green links that do not only connect habitats but also people



CLEVER Cities

Co-benefits: healthy and safe neighbourhitsu

- Increased social cohesion through green links that do not only connect habitats but also people
- Healthier and safer communities through easily accessible, attractive and well frequented green spaces which buffer noise and pollution. provide a possibility for outdoor activities and social gathering



CLEVER Cities

Co-benefits: green roofs and facades

- Increased social cohesion through green links that do not only create habitats but also people
- Healthier and safer communities through easily accessible, attractive and well frequented green spaces which buffer noise and pollution, provide a possibility for outdoor activities and social gathering
- Protection against natural disasters e.g. heavy rainfalls, flooding and heat waves



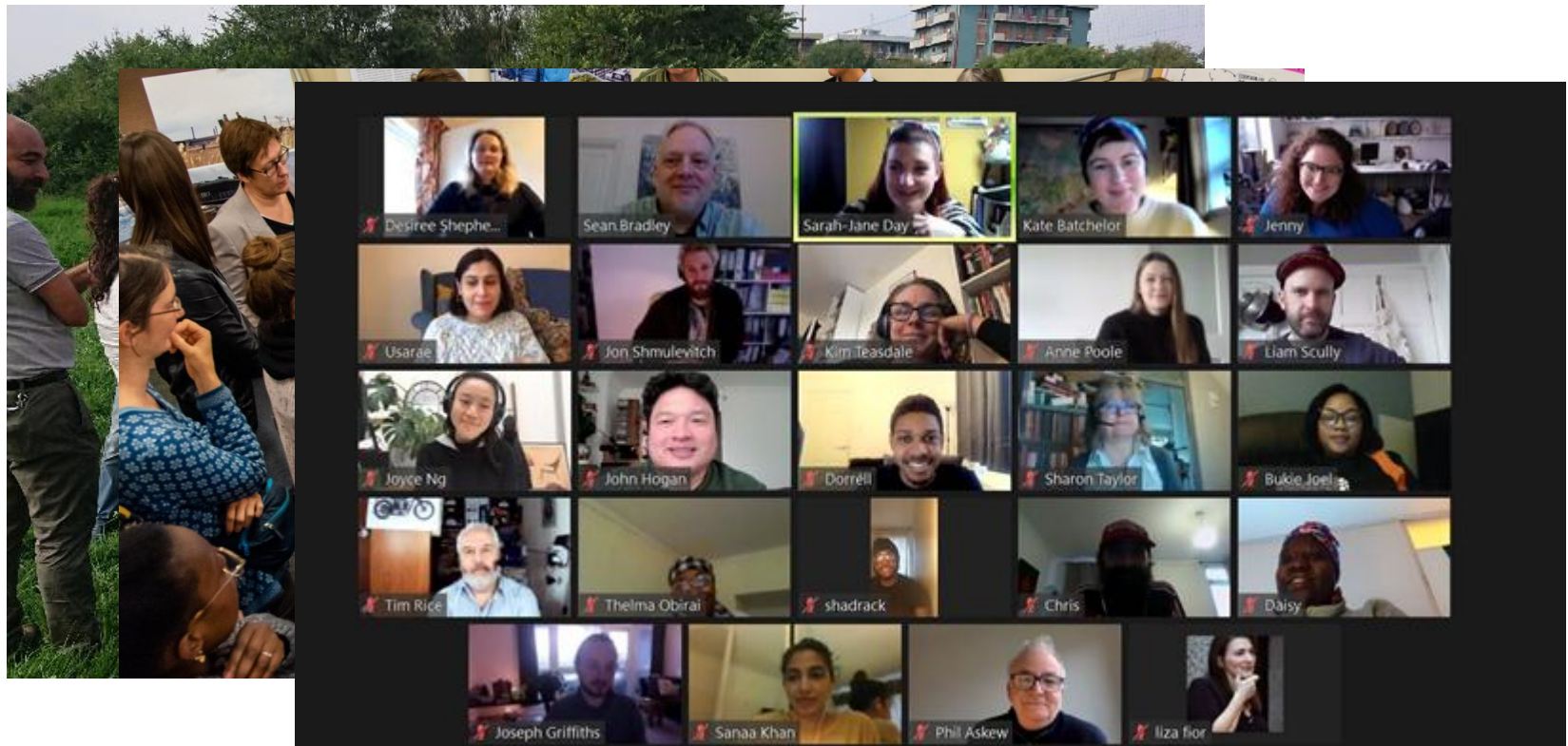
CLEVER Cities

Co-creative approach



CLEVER Cities

Involvement of local communities



CLEVER Cities

Aim: shared sense of ownership



Nature-based Solutions

Nature-based Solutions are locally appropriate, adaptive actions to protect, sustainably manage or restore natural or modified ecosystems in order to address targeted societal challenge(s) - such as climate change mitigation -, while simultaneously enhancing human well-being and providing biodiversity benefits.

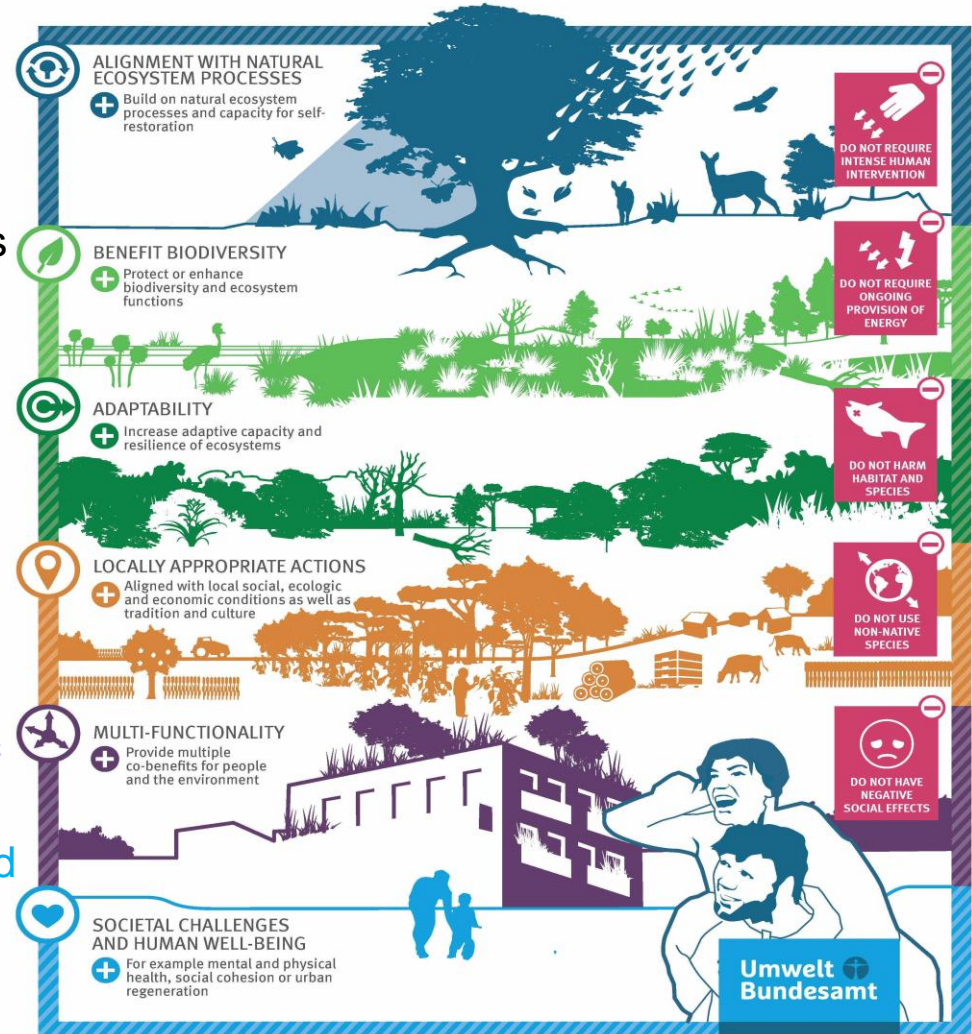
Nature-based solutions

Impact logic

- Simultaneous answer to a nexus of socio-ecological challenges
- Halting the loss of biodiversity
- Supporting the adaptation to climate change
- Requires local customization
- Providing co-benefits in terms of social cohesion, economic prosperity, safety, and health and wellbeing



Energy saving?





CLEVER
Cities

Thank you for your attention!

martin.krekeler@sk.hamburg.de

clevercities@sk.hamburg.de

www.clevercities.eu